



# EXPORTING MISSOURI CORN THROUGH U.S. BEEF AND PORK



In 2020, the market value of beef and pork exports to  
**Missouri Corn = \$73.9 million**

(corn consumed by beef and pork exports at average corn price)  
 21 million bushels x \$3.52 per bushel



In 2020, beef and pork exports accounted  
**for 21 million bushels**  
 of Missouri corn usage



In 2020, the market value of beef and pork exports to  
**Missouri DDGS = \$17.2 million**

(corn consumed by beef and pork exports at average DDGS price)  
 111,500 tons x \$154.59 per ton

In 2020 beef and pork exports contributed  
**11.5% of bushel value = \$0.41**  
 at an average price of \$3.52 per bushel

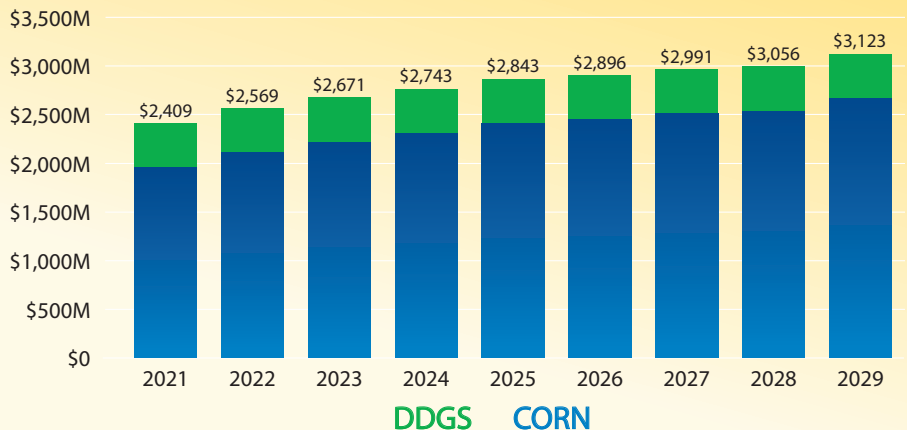
U.S. beef and pork exports contributed  
**\$70.11 per Missouri corn acre**  
 at a yield of 171 bushels/acre  
 in 2020

**\$711 million**  
 The projected market value of beef and pork exports to Missouri corn from 2021–2029

**\$56.8 million**

The projected market value of beef and pork exports to Missouri DDGS from 2021–2029

U.S. BASELINE CORN AND DDGS VALUE 2021-2029 (\$MILLIONS)



Beef and pork exports accounted for **530.5 million bushels of corn in 2020**

Beef and pork exports accounted for **3.027 million tons of DDGS in 2020**

DDGS utilized by beef and pork exports in 2020 represented about **\$0.04 per gallon** to the average gross margin of an ethanol mill



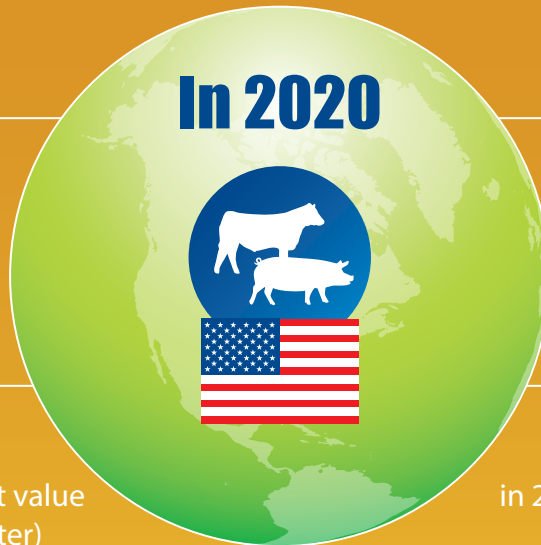
**14.1%** of U.S. beef production was exported



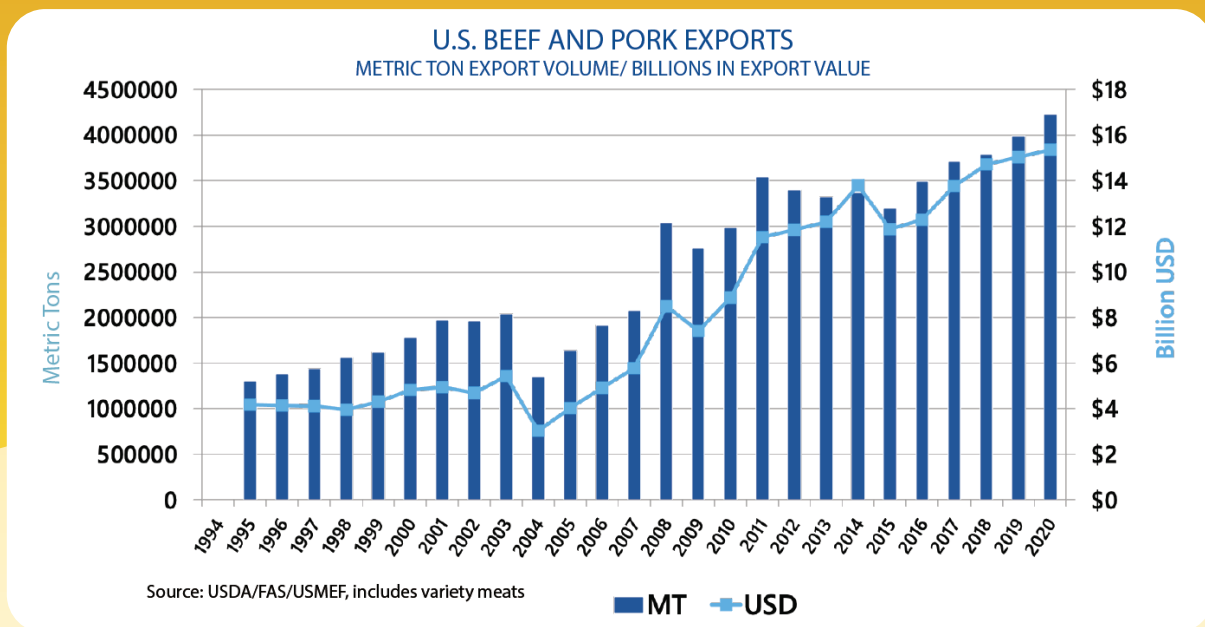
**29.3%** of U.S. pork production was exported



Beef export value equated to **\$309.75 per head** of fed cattle slaughtered in 2020 (export value divided by 2020 fed cattle slaughter)



Pork export value equated to **\$58.65 per head** slaughtered in 2020 (export value divided by 2020 commercial hog slaughter)



“The corn industry provides critical support for USMEF's efforts to expand global demand for U.S. red meat,” says USMEF Senior Vice President of Industry Relations John Hinners. “This study helps quantify the return on that investment.”



The U.S. Meat Export Federation (USMEF) is a non-profit trade association that works to create new opportunities and develop existing international markets for U.S. beef, pork and lamb. USMEF is a unique collaboration of nine distinct segments of American agriculture, joining together to implement successful marketing programs for U.S. pork, beef and lamb around the world.

U.S. Meat Export Federation  
1660 Lincoln Street, Suite 2800  
Denver, CO 80264  
Tel 303.623.MEAT (6328)  
Fax 303.623.0297  
www.usmef.org



For more information about this independent study conducted by World Perspectives, contact John Hinners, Erin Borrer or Jessica Spreitzer.