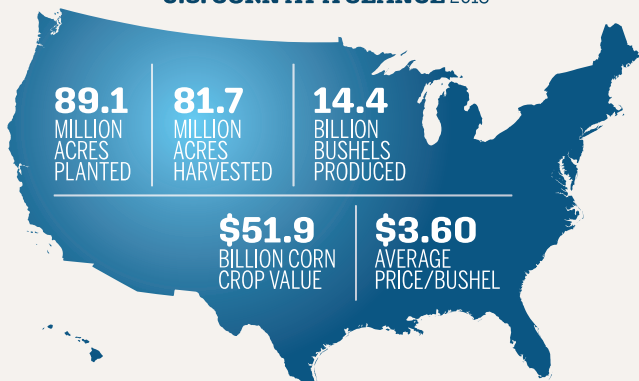


# Fast Facts about Corn

# CORN in Pet Food

## U.S. CORN AT A GLANCE 2018

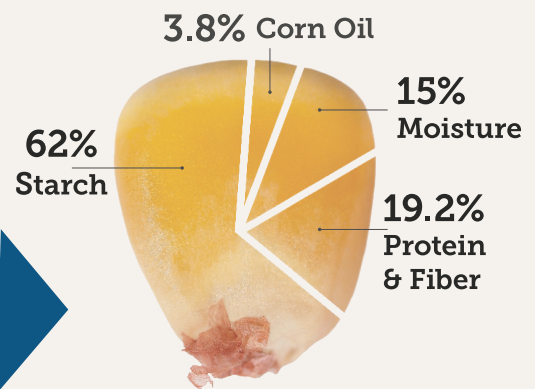


SINCE 2000

- Corn production up 4.7 billion bushels
- Average yields have grown by nearly 40 bushels/acre
- U.S. total corn production is up 47% and corn yields have increased by 29%

In 2018, corn farmers grew 14.4 billion bushels of field corn. Thanks to technology, farmers continue to produce more per acre on less land using fewer inputs. There were 1,735 million bushels of U.S. corn ending stocks. The average year over year yield growth is 1.2%.

Here's a breakdown of the average composition of a kernel of corn:



Corn is highly digestible, with nearly 100% disappearance of starch.

Corn toasts well and forms browning reaction products with rich flavor notes.

Corn is tasty and preferred over other grains.

Corn is high in antioxidants, lutein and zeaxanthin.

Short chain fatty acids found in corn support immune function and homeostasis of the intestine.

Grains cause less than 1.5% of all pet food allergy cases.

